

TECHNICAL DATA SHEET Slimline 300 | High Efficiency, Low Profile Heat Recovery System

* **A+** **A**



PRODUCT CHARACTERISTICS DATABASE (PCDB)

| Exhaust Terminal Configuration | Specific Fan Power (W/l/s) | Heat Recovery Efficiency (%) |
|--------------------------------|----------------------------|------------------------------|
| Kitchen + 1 wet room | 0.60 | 90 |
| Kitchen + 2 wet rooms | 0.62 | 90 |
| Kitchen + 3 wet rooms | 0.71 | 87 |
| Kitchen + 4 wet rooms | 0.83 | 86 |
| Kitchen + 5 wet rooms | 0.97 | 85 |
| Kitchen + 6 wet rooms | 1.12 | 84 |

PRODUCT

The Slimline 300 shall be a constant flow, low profile and lightweight whole house heat recovery ventilation system.

APPLICATION SUITABILITY

The high-efficiency and constant flow EnviroVent Slimline 300 is ideal for ceiling mounted or wall mounted applications such as apartments, care homes, offices and student accommodation to provide optimum ventilation.

The Slimline 300 unit has a maximum airflow rate of 300 m³/h and a high thermal efficiency heat exchanger up to 92% to improve indoor air quality and deliver optimum comfort. A 'Plus' version shall also be available featuring additional connection options such as a CO₂ sensor.

SAP 2012

PERFORMANCE

| Ventilation capacity at 150Pa (m ³ /h) | System sound emission dB(A) | Rated power at 70% of the max appliance capacity (W) |
|---------------------------------------------------|---------------------------------------|------------------------------------------------------|
| Max 300 | <46 at 225 m ³ /h & 100 Pa | 51 at 210 m ³ /h & 50 Pa |

*Note: 'A+' rating only applicable to Slimline 300 with 2 or more sensors

ACCREDITATIONS

- Conforms to the requirements of the UK Building Regulations and the Technical Standards for Ventilation
- Conforms to requirements of the EC council directives relating to Electromagnetic Compatibility and Electrical Safety (LDV and EMC).
- CE Marked
- SAP PCDB Listed
- Passive House Certified

SOUND POWER

In practice, the value may deviate 1 dB(A) as a result of measuring tolerances

| Ventilation capacity (m ³ /h) | | 100 | 150 | 225 | 300 | | | | | |
|------------------------------------------|----------------------------|-----|-----|-----|-----|----|-----|-----|-----|-----|
| Sound power level Lw [A] | Static pressure [Pa] | 17 | 40 | 38 | 80 | 84 | 100 | 160 | 150 | 178 |
| | Housing emission dB(A) | 29 | 30 | 37 | 40 | 46 | 46 | 47 | 53 | 53 |
| | Duct "from dwelling" dB(A) | 32 | 32 | 41 | 43 | 49 | 49 | 50 | 55 | 55 |
| | Duct "to dwelling" dB(A) | 43 | 44 | 51 | 53 | 60 | 61 | 62 | 69 | 68 |

TECHNICAL DATA SHEET

Slimline 300 | High Efficiency, Low Profile Heat Recovery System

CONTROLS

The unit shall come as standard with the intelligent control module, that can be used to adjust the settings and airflow rates. The built-in timer function can be used to set the ventilation rate per day/week/weekend. Additionally, one or more 4-way switches, wireless RF controls or a humidity sensor may be installed.

MOTOR

The unit shall incorporate Ultra Low Watt EC motor technology to provide the lowest possible SFP and unit running costs with sealed for life ball bearings and designed to operate continuously at a pre-set 'background' rate.

FAN

EC motors shall power the centrifugal forward curved fan impellers.

HEAT EXCHANGE CELL

The heat exchange cell shall be a high efficiency counter flow cell.

SUMMER BYPASS & FROST PROTECTION

The Slimline 300 unit shall incorporate a 100% mechanical summer bypass as standard. The bypass contributes to an improved comfort level in summer and is controlled automatically by measuring indoor and outdoor temperatures. An external pre-heater shall be available to ensure intelligent frost protection.

CONSTANT FLOW CONTROL

The 'constant flow' technology ensures maximum efficiency and that the commissioned airflow rate is always delivered despite any resistance encountered in the ductwork or filters. The 'constant flow control' system also enables commissioning to be carried out much quicker and more easily, saving on installation costs.

FILTRATION

The unit shall incorporate 2 x ISO Coarse 60% [G4] filters with the option of an ePM1 50% [F7] supply filter.

SERVICING / MAINTENANCE

Supply and extract filters shall be located within the unit and exchanged annually. The unit shall incorporate a heat exchange cell for life and shall not require any maintenance within five years.

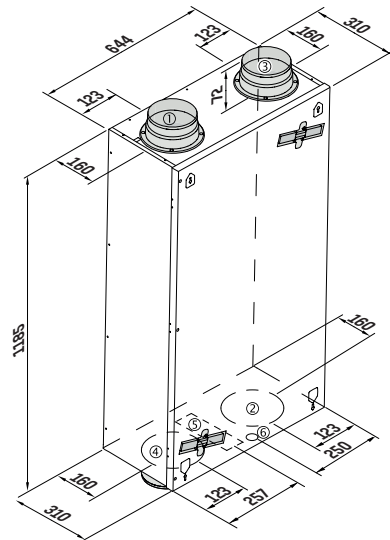
WARRANTY

The unit shall be covered by a 2 year warranty on parts and 5 years on the heat exchanger subject to the specified maintenance and servicing.

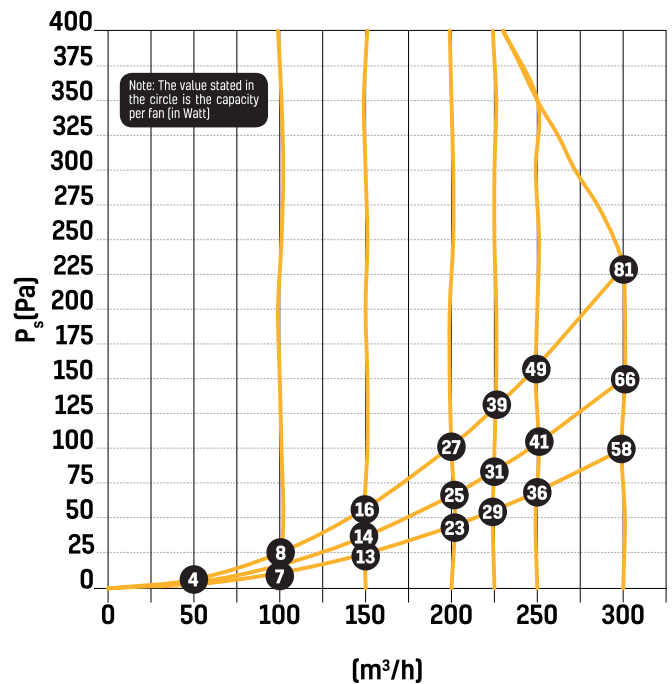
INSTALLATION

Full installation guide shall be enclosed with all products; or sent separately in advance if required. The unit shall be capable of being wall or ceiling mounted with the brackets supplied. The unit shall be suitable for installation in an accessible ceiling void or wall mounted with easy commissioning features. The Slimline 300 shall incorporate Ø150/160 mm extract and supply spigots.

SIZE



PERFORMANCE CURVE



A full Consultant Specification can be sent on request.